

IMMACULATE MONEY MAKING 2 LOCATION SPA & SALON!

This 2 location spa and Salon business is top of the line with its elegance, beauty, sales and profit. These spas are beautiful and elegant. The business is ready for a new owner to put just a little more time and energy into it, and earn a hefty profit.

The business has an established reputation in the community and has many loyal customers. There is significant opportunity to build upon the existing base, and increase revenue and profit through marketing, advertising and service to the immediate area and beyond.

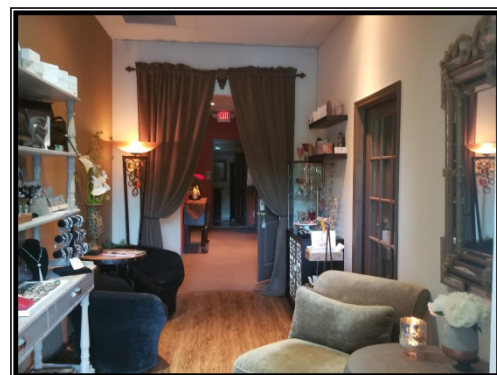
➤ Spa 1 with salon, located in Gwinnett County established March 2011.

➤ Spa 2 spa only, located in Forsyth County established March 2016.

The owner's health is not good and needs to sell.

Investment Highlights

- Actual Revenue is more than \$950,000
- Actual discretionary income more than \$237,000
- Great location providing for long term growth and income
- Spa 1 with salon has 7 rented stations with individual shampoo bowls



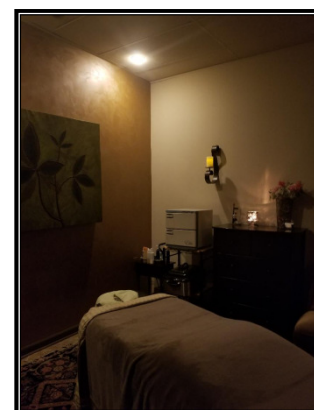
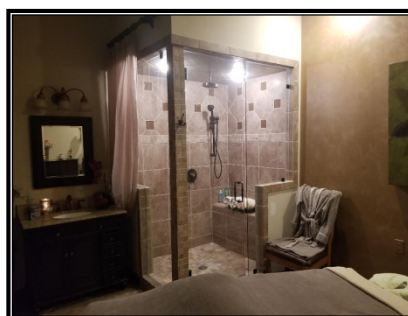
Assets

Plenty! See Attached

KEEP ALL CONTACT CONFIDENTIAL!!

Facility

- Spa 1 approximately 5,000 square feet
- Monthly gross rent ~
- Spa 2 approximately 2,200 square feet
- Monthly gross rent ~



HOURS OF OPERATION

Sunday: Closed
Mon – Tues: 10 am – 7 pm
Wed: 9 am – 8 pm

Thurs – Fri: 9 am – 8 pm
Sat: 9 am – 6 pm

PURCHASE PRICE AND TERMS OF SALE

- Asking \$799,000 including all equipment, furniture, fixtures and inventory

The business is priced based on the income the spas currently generate, and the amount of time and money put into the facilities to make them the high class, elegant spas they are. The Buyer can base his/her buying decision on the solid and healthy reputation of this spa and the secure locations in busy, high traffic areas. seasoned business with loyal customers; and the start up and establishment costs a new business owner could expect in starting this business.

Call Priority Business Acquisitions, Inc. (770) 932-6122 to arrange a visit!